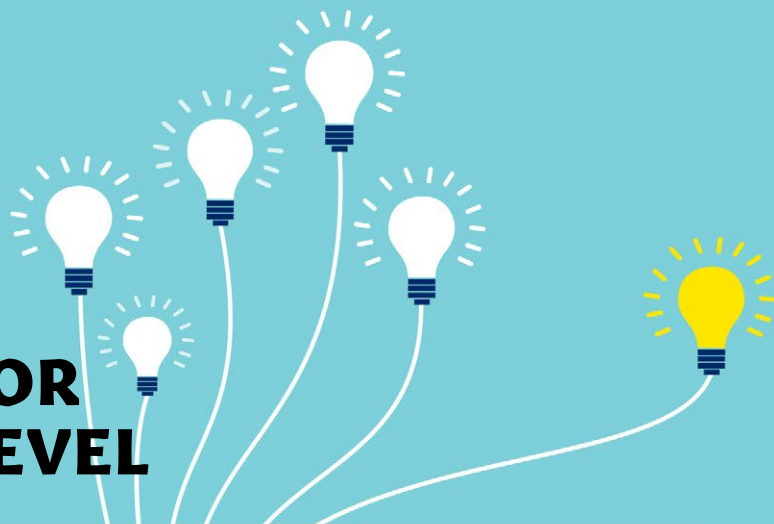


# INSPIRE LEADERSHIP FUNDAMENTALS FOR LEADERS AT ANY LEVEL



## ALIGN TO DRIVE COLLABORATION

### DO THE PEOPLE LEADERS IN YOUR BUSINESS...

- Regularly connect people to purpose and share the organisational vision?
- Effectively cascade goals and hold teams accountable to results?
- Foster a collaborative environment built on trust and respect??
- Give feedback that directly improves performance?
- Develop the capabilities of people in their team?

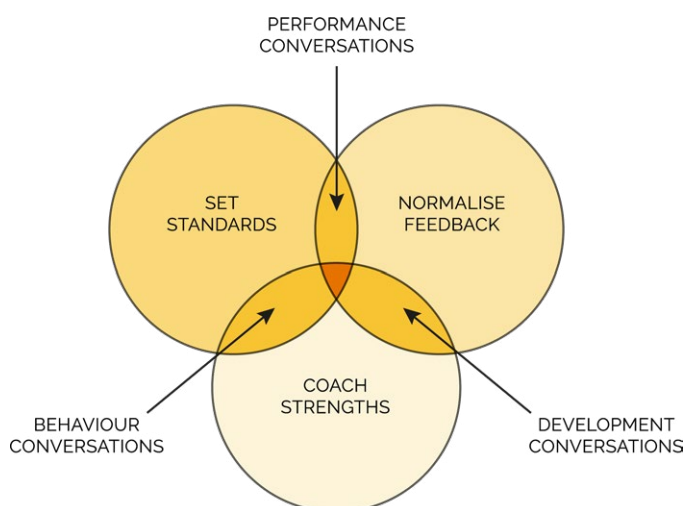
Helping leaders understand their role in setting clear benchmarks for performance, coaching, giving feedback, and holding teams accountable to these behaviours is mission critical to workplace engagement and performance.

Time poor people leaders need maximum output from their time. A higher ratio = better results with less effort!

LEADERS WHO ARE	FOCUS ON	ACHIEVES AN EFFORT-TO-RESULT RATIO
INSPIRING	POTENTIAL	1:10
SUPPORTIVE	PEOPLE	1:5
DIRECTIVE	RESULTS	1:1
BUSY	ACTION	5:1
HOSTILE	CONTROL	10:1

## INSPIRE PROGRAM

### THE LEADERSHIP SYSTEM



**INSPIRE** is a program that develops leaders' capacity to transform potential and inspire high performance. The program is ideal for leadership teams who are collectively responsible for delivering results and scaling the organisation.

This program builds the skills of leaders to inspire teams by adopting Stephanie's Leadership System; a system of deceptively simple behavioural codes for unlocking potential in teams.

**THE LEADERSHIP SYSTEM** is a perpetual process of building capability and connecting people to purpose. It includes:

- **Setting standards** for performance that are clear and measurable
- **Normalising feedback** by both asking for and giving feedback
- **Coaching strengths** to develop capability and confidence in teams.

Powerful conversations are the glue that tie the whole system together – performance, development and behaviour conversations.

## PROGRAM FORMAT:

INSPIRE Includes 4 x 4hr leadership development workshops able to be flexibly delivered (online, in-person, or hybrid), over consecutive days or weeks apart. This is followed up by a 90min coaching accountability call 6-8 weeks post program completion.

### Workshop 1 (4hrs) • Inspire High Performance

- Inspirational leadership
- Your purpose
- SMART standards

### Workshop 2 (4hrs) • Normalise Feedback

- Get quality and quantity right
- Learn AID for feedback
- Feedback practice

### Workshop 3 (4hrs) • Be a Coach

- The mindset of a coach
- GROW for coaching
- Coaching practice

### Workshop 4 (4hrs) • Leverage Strengths

- The amplifier of strengths
- Put strengths to work
- High performance plans

## PROGRAM INCLUSIONS:

### INSPIRE 2-day leadership development program, inclusive of:

- Welcome packs and learning journal
- Gallup Strengths-Finder 2.0 diagnostic
- Two reference books, including Stephanie's book *Purpose, Passion & Performance*
- All communications to attendees including pre- and post-session emails with links to online content & reference material
- Post program evaluation and summary report to client liaison.

## INVESTMENT:

- **Full Program (4 workshops) \$20,000 for groups of up to 15, plus a \$150 per participant resources fee.**
- **Individual 4 hour workshop may be delivered as stand-alone session at \$7,500+GST + \$150 per participant resources fee.**

*Plus return travel expenses from Byron Bay, NSW.*



STEPHANIE BOWN is the acclaimed author of *Purpose, Passion & Performance: how systems for leadership, culture and strategy drive the 3Ps of high performing organisations* and has partnered some of Australia's most successful business leaders, founders and entrepreneurs both in Australia and internationally.

Stephanie works with leadership teams to embed high performance habits that transform cultures and deliver sustainable growth. She is a YPO accredited facilitator, Graduate of the Australian Institute of Company Directors, and Master of Organisation Dynamics. Stephanie is passionate about the collective capacity of small groups to of people to come together to change the world.

## WHAT CLIENTS SAY ABOUT STEPHANIE...

“We engaged Steph to work with our exec team and team leaders to embed a number of core skills including coaching, effective leadership, enabling and resilience. As a business who values our people, organisational culture and team engagement above all else, we entrusted Steph to support our journey and certainly weren't disappointed. Her understanding of our organisational DNA and development needs was exceptional, as was the content she delivered and the way in which she delivered it. I ultimately retained Steph as a personal leadership coach and can't recommend her highly enough.”

NICK BOOTS, General Manager, Stone and Wood Brewing Company



Phone: +61 439 044 940 | Email: [stephanie@stephaniebown.com](mailto:stephanie@stephaniebown.com) | [stephaniebown.com](http://stephaniebown.com)  
in [stephaniebown1](https://www.linkedin.com/company/stephaniebown1) | @ [stephiefromthebay](https://twitter.com/stephiefromthebay) | Post: PO Box 185, Suffolk Park, NSW 2481